

1

1. Franklin Mining Co. stamp mill on Portage Lake in 1883. This mill burned down in 1898 and was rebuilt in a different location near Dollar Bay. Quincy acquired this land adjacent to its smelter in 1908. (neg. 03412, courtesy of MTU Copper Country Archives)





(ABOVE)  
2. Quincy Smelting Works south side overview, as seen from Houghton c. 1910  
(neg. 01316, HAER MI-2-174, courtesy of MTU Copper Country Archives)

(LEFT)  
3. Quincy Smelting Works overview, north side overview c. 1910  
(neg. 05463, HAER MI-2-176, courtesy of MTU Copper Country Archives)



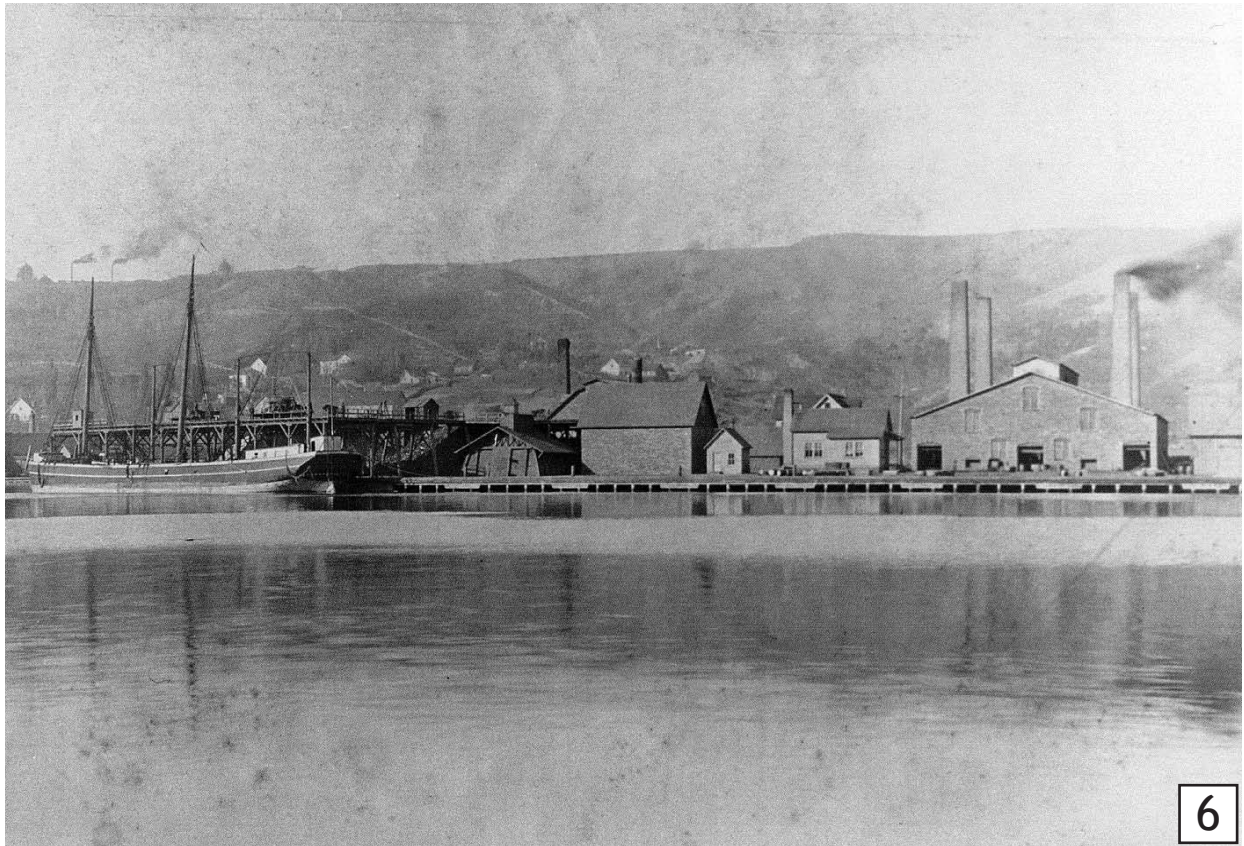


4. Panoramic view of the Quincy Smelting Works, 1910. (*Library of Congress, panoramic photographs collection, PAN US GEOG- Michigan No. 11*)

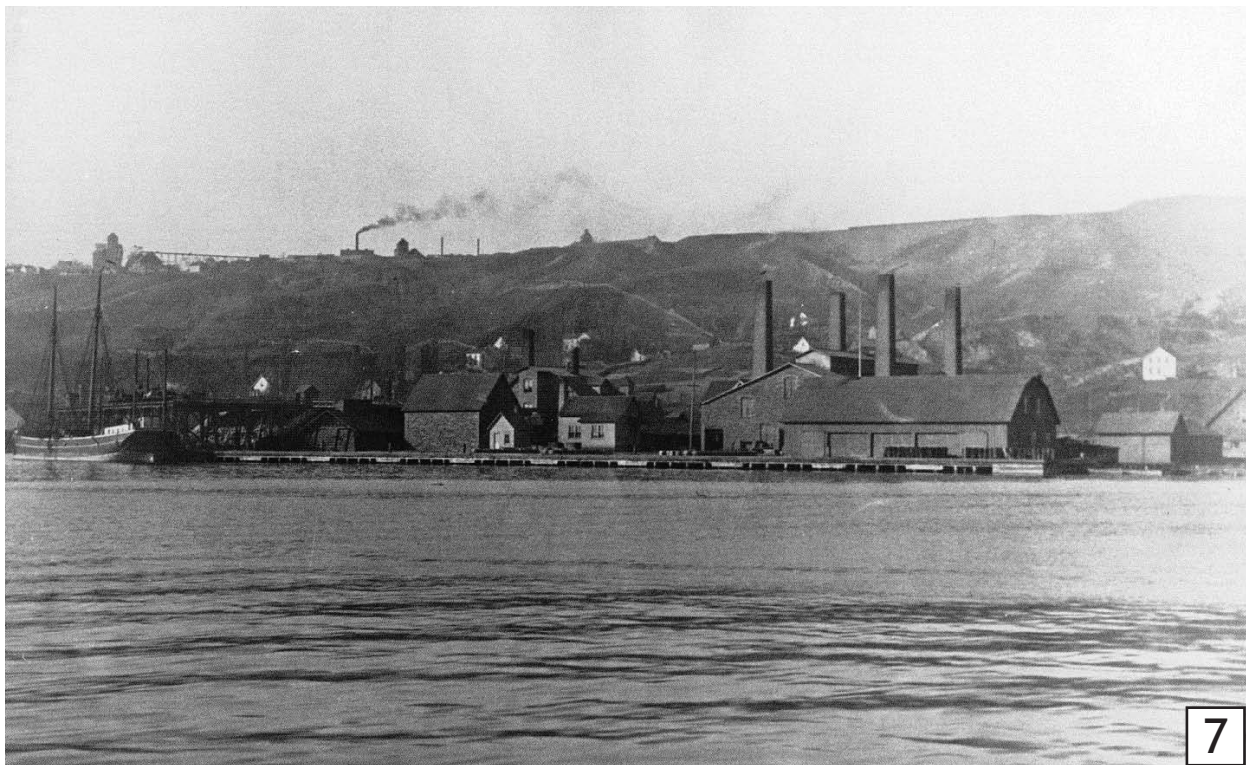


5. Enlarged of panoramic view of the Quincy Smelting Works, 1910. (*neg. 03624, HAER MI-2-175, courtesy of MTU Copper Country Archives*)





6. Close view of Quincy Smelting Works showing a ship docked in front of the coal dock.  
*(neg. 03697, courtesy of MTU Copper Country Archives)*



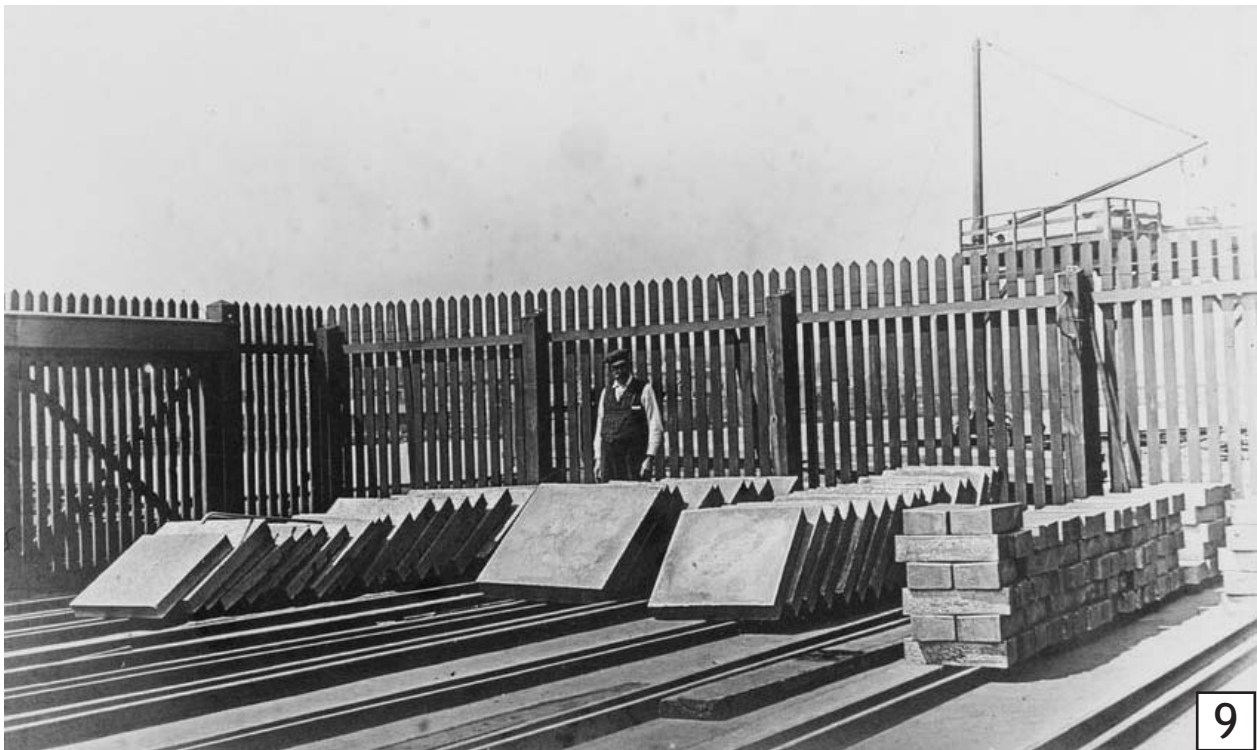
7. Similar view as above of Quincy Smelting Works showing an oblique angle.  
*(neg. 03698, courtesy of MTU Copper Country Archives)*





8

8. Slag shed, briquetting bld. & trestle, c.1907  
(courtesy of MTU Copper Country Archives)



9

9. Copper cakes & blocks awaiting transport in shipping yard adjacent to the dockside warehouse.  
(HAER MI-2-178, courtesy of MTU Copper Country Archives)





10

10. Foregrnd: east shoreline slag pile, left: reverberatory slag trestle  
right: mould shop. (HAER MI-2-182 photo by Jet Lowe, 1978)

11. Left: Charcoal house, center: assay office. (HAER MI-2-210 photo by Jet Lowe, 1978)



11





12. Worker operating a Walker Casting Machine at the Calumet & Hecla smelter, Lake Linden, MI c.1900. (*collection of Views of the Past, Marquette, MI*)