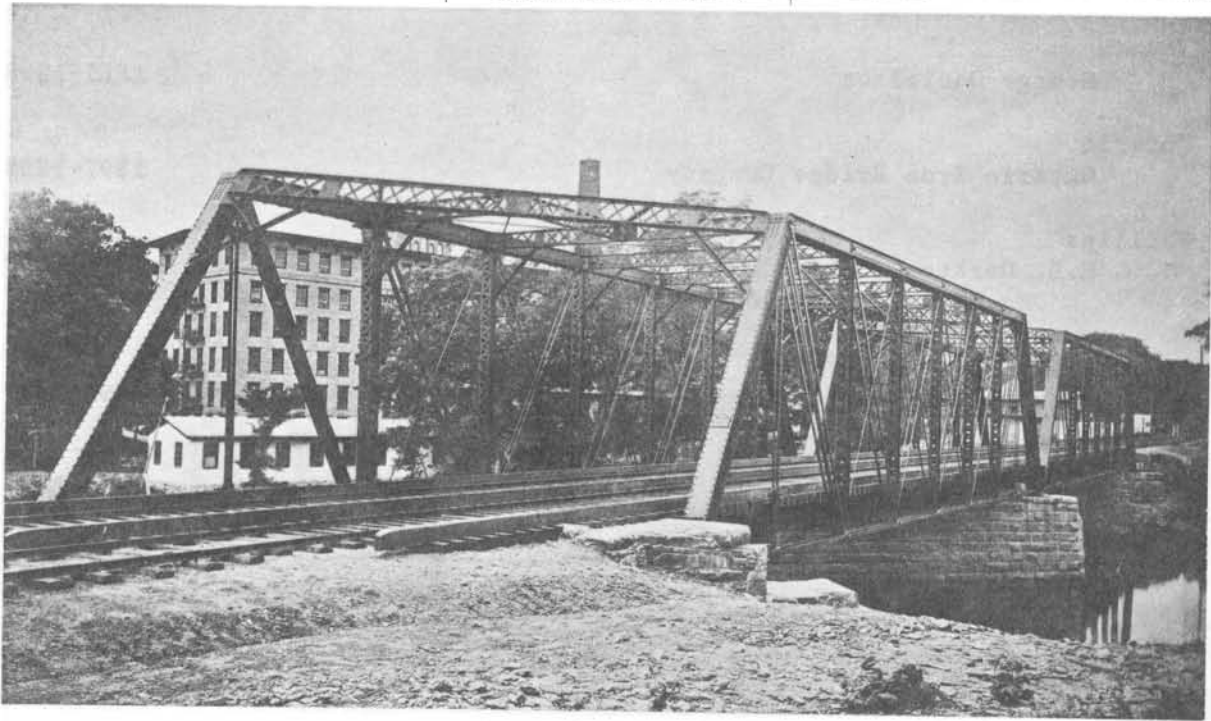


BRIDGES,  
 ROOFS, GIRDERS,

DRAW BRIDGES,  
 VIADUCTS, TURN-TABLES,



*Blackstone River Bridge Prov. & Wor. R.R. 115 ft. Spans.*

*Structures built by us, nearly all of which are from our own designs.*

Cheapside Bridge, over Deerfield River, for Connecticut River R. R.,	Length 710 feet
Connecticut River Bridge, Double Track, for Fitchburg R. R.,	" 650 feet
Blackstone River Bridge, Double Track, for Providence & Worcester R. R.,	" 230 feet
Canal Bridge, Lowell, Mass., Three Tracks, Boston & Lowell R. R.,	Span 160 feet
Cochecho River Bridge, Double Track, Boston & Maine R. R.,	" 160 feet
Fitchburg and Boston & Lowell R. R., crossing Somerville, Three Tracks, F. & B. & L. R. R.'s,	" 112 feet
Biddeford Bridges, Double Track, Boston & Maine R. R.,	Spans, 120, 104, 124 feet
High Viaducts, height 61 feet, Manchester & Keene R. R.,	Total length 1075 feet
Seakonk River Bridge, with 215 feet draw, City of Providence,	Total length, 1250 feet
Broadway Bridge, City of Boston,	Width 60 feet, span 155 feet
Groveland Bridge, with 168 feet draw, over Merrimack River,	Total length, 800 feet
Deer Island Bridge, with draw 154 feet over Merrimack River,	Total length, 404 feet

AND MANY OTHERS OF VARIOUS DIMENSIONS.

Also, many large Iron Roofs, of which the New England Manufacturers Institute Building, Boston, covering five acres, and containing 850 tons of iron truss work, is a fair example.

In addition to our regular bridge work, we have manufactured a large number of superior wrought-iron Turn-tables which are now in satisfactory use on many of the leading railroads of the country, of which the following may be named: Boston & Albany R. R., Baltimore & Ohio R. R., Atlantic & Pacific R. R., Atchison, Topeka & Santa Fe R. R., Mexican Central R. R., Chicago, Rock Island & Pacific R. R., Cincinnati Southern R. R.

Yours respectfully,

BOSTON BRIDGE WORKS.