

**SOCIETY FOR
INDUSTRIAL
ARCHEOLOGY**

NEWSLETTER

SUPPLEMENTARY ISSUE NO THREE

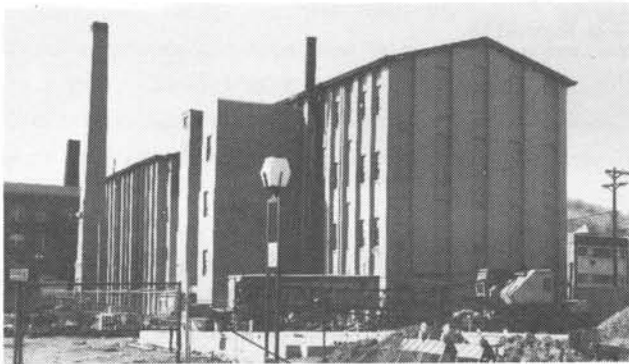
May

1973

PATERSON

THE WALKING TOUR

The Society's second industrial site tour took place in Paterson, New Jersey, on Saturday, 7th April 1973. As in the case of the first tour—the Industrial Architecture of the Blackstone and Quinebaug River Valleys of Massachusetts, Connecticut and Rhode Island (20th October 1972)—the event was sponsored jointly with an organization having interests and goals similar to those of the SIA: The Great Falls Development Corporation (see page 4).



The Dale Avenue School, a former thread factory, the Tour starting point.



Mary Ellen Kramer, a Paterson renaissance prime mover and GFDC Director, leads one group out.

INDUSTRIAL PATERSON: THE TOUR

Dianne Newell Macdougall

Approximately 200 people convened at the Dale Avenue School, built in 1866 as a thread and tailors' trimmings factory, recently adapted by the City for use as a primary school. The tourers then were escorted in

groups through the heart of Paterson to the complex of Allied Textiles and an adjacent group of early industrial buildings, in many cases disused. At Allied, a sprawling hybrid structure assembled from a variety of contiguous mill and factory buildings, the tour participants observed at close range and at their leisure textile dying opera-