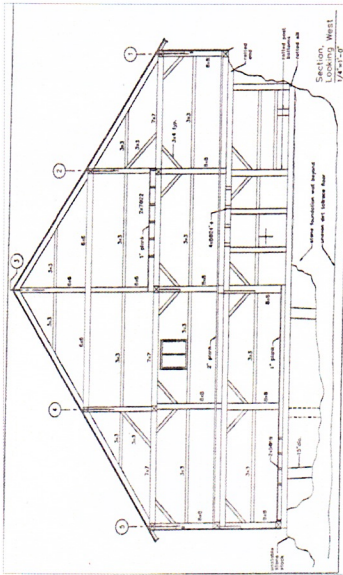


CHAMBERLIN MILL TODAY



In 2008 The Nature Conservancy acquired the mill and surrounding 98 acres from the Chamberlin Family Trust. The following year, in conjunction with the Conservancy, the Woodstock Historical Society undertook a study to explore the possibility of preserving the mill building. A structural conditions assessment and feasibility study were undertaken finding that the mill is both worthy of preservation and that a sustainable future is possible. Work then began to establish a long-term owner and custodian for the mill. Chamberlin Mill, Inc. was formed as a tax-exempt, nonprofit organization in 2012 with the goal of preserving and sustaining Chamberlin Mill for the benefit of current and future generations.



OPPORTUNITIES FOR ACTION

The Chamberlin Mill property offers a wide range of opportunity for individuals and organizations to **research** the mill and the surrounding community, **assist** in the preservation and restoration efforts aimed at documenting and revitalizing the mill, **promote** the mill by volunteering at open houses and other events to increase awareness of this important resource, **utilize** the mill as an educational opportunity, **participate** in care-taking of the property, and **donate** resources that will sustain the mill.

- Become a volunteer
- Join "Friends of Chamberlin Mill"
- Donate to Chamberlin Mill, Inc.



Chamberlin Mill



A Rare 19th Century Sawmill
Old Turnpike Road
Woodstock, Connecticut

CONTACT CHAMBERLIN MILL, INC.

www.chamberlinmill.org

P.O. Box 2

Woodstock, CT 06281

chamberlinmill@gmail.com

860-428-0656

"...one of the most important small-scale industrial sites I have ever seen in New England"

Nicholas Bellantoni
CT State Archaeologist

CHAMBERLIN MILL

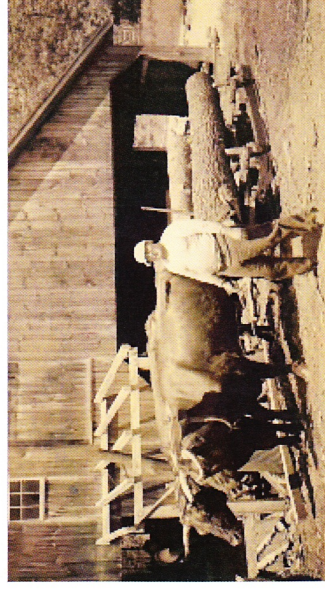
The 19th century Chamberlin Mill in West Woodstock, Connecticut is a rare example of a water-powered circular-saw lumber mill that was later converted to gasoline power. A two-story post and beam structure with an expansive loft, the building is supported on a high, dry-laid field stone foundation which incorporates the penstock and turbine. This sturdy structure still houses many of the historic cast iron gears and flat belt pulleys that transferred the power of the water via the turbine to the circular saw on the main level.

For most of the mill's lifespan it was powered by water from the adjacent Still River, which was dammed to form Lower Chamberlin Pond and a small millpond below the dam. In summer the water level of Lower Chamberlin Pond was drawn down to grow hay, and in winter it was raised to provide power to the mill. Today, the dam remains visible and intact and the surrounding historic neighborhood and landscape contributes to the telling of the mill's story.

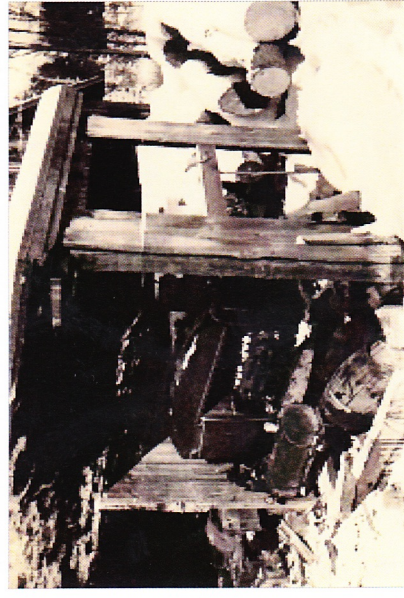


HISTORY OF THE MILL

Sawmills were essential structures to the European settlement of New England towns. By 1861, three were listed in the business directory for West Woodstock alone. The first known cartographic record of a mill on the Chamberlin site is the 1833 Lester Map of Eastern Connecticut. However, deed research has revealed that a sawmill and gristmill were situated on the site at the end of the 18th century, erected by West Woodstock resident Mannaseh Hosmer.



An important event in the life of the mill was the Great Flood of 1936. The flood overtook the mill, probably damaging the original penstock, the pipe conveying water from the mill pond to the turbine. Shortly after this date, the mill resumed operation, powered by a cut-down 1928 Studebaker. Oxen were still used to drag the logging sled to the mill at least through the 1930s, but eventually they too were replaced by a homemade motorized skidder. The mill had come to terms with 20th century technology as it entered its last decades of operation.



CHAMBERLIN MILL

Old Turnpike Road, Woodstock, CT

PARTNERING FOR PRESERVATION

January, 2014

Over the past five years, the effort to preserve Chamberlin Mill has benefited from contributions of many kinds from many quarters. We would like to list and thank contributors here:

ORGANIZATIONS and INSTITUTIONS

- **Brayton Grist Mill (CT)** (tour and advice)
- **Celebrating Agriculture** (inclusion in its annual local agriculture celebration)
- **Historic New England** (inclusion in *100 Years 100 Towns* oral history project)
- **The Connecticut Trust for Historic Preservation** (HPTAG grants for Conditions Assessment and Feasibility Report)
- **Joshua's Tract Land Trust (Gurleyville Mill)** (meeting and tour)
- **The Last Green Valley, Quinebaug-Shetucket National Heritage Corridor** (inclusion in regional *Walktober* program)
- **Ledyard Sawmill Park (CT)** (advice and demonstration)
- **Morse Mill (VT)** (advice and demonstration)
- **The Nature Conservancy** (initiator of mill preservation discussions, and pending donor of mill site to Chamberlin Mill, Inc.)
- **Society for Industrial Archaeology** (CT study team, national tour)
- **Society for the Preservation of Old Mills** (grant for interim structural stabilization, publication)
- **West Woodstock Congregational Church** (space for community meeting)
- **Woodstock Agricultural Society** (interim storage of mill sled)
- **Woodstock Historical Society** (lead partner, under presidents Delpha Very and Gail White, in study of mill's long-term sustainability)
- **Yale University, School of Forestry and Environmental Sciences** (inclusion of mill tour in its Yale Forest summer program)

LOCAL, STATE AND FEDERAL GOVERNMENT:

- **Congressman Joe Courtney** (support for expedited IRS tax exemption)
- **Connecticut State Archaeologist** (Nicholas Bellantoni's understanding of the mill's significance, and support of the preservation effort)
- **Connecticut State Representative Mike Alberts** (letters of support)
- **Connecticut State Senator Tony Guglielmo** (letters of support)
- **Eastern Connecticut Conservation District, Inc.** (review of stormwater runoff conditions)
- **Town of Woodstock, Board of Selectmen** (letters of support)
- **Town of Woodstock, Highway Department** (road drainage improvements)
- **Town of Woodstock, Historic Properties Commission** (partner with Woodstock Historical Society in study of mill's long-term sustainability)

PROFESSIONAL CONSULTATIONS:

- **Peter Hamm**, restoration carpenter
- **Tom Kelleher**, Curator, Old Sturbridge Village
- **Larry Lowenthal**, National Park Service retired, historian
- **Paul Lynn**, former Woodstock Town Historian and potter
- **Richard Mackowiak**, hydroelectric engineer
- **Dennis Picard**, Director, Storowton Village Museum
- **Myron Stachiw**, historian and anthropologist

BUSINESSES AND CORPORATIONS:

- **CME Associates, Inc.** (matching funds for feasibility report, surveying and engineering consultation)
- **New England Plasma** (web design and funding)
- **Foskett Equipment** (transportation)
- **Hart's Tree and Landscape** (tree removal)
- **Morse Lumber Co., Inc.** (lumber)

INDIVIDUAL CONTRIBUTORS:

In-kind services (Mill Clearance, Inventory, Storage, Tree removal, Oral histories, Events) ~ Dawn C. Adiletta, Joseph Adiletta, Sky Bridgman, Sarah Bridgman, Dan Chamberlin, Lisa Davidson, Jeff Davis, Clifford French, George French, William French, Donald Froehlich, Chris Gee, Peter Hamm, Ayla Kardestuncer, Elaine LaChapelle, Russell Martin, Jonathan Mason, Jean McClellan, Jock McClellan, Brian Musumeci, H. Ray Paine, Andy Quigley, Mike Quigley, Anthony Reed, Kit Sears, Evelyn Cole Smith, Seth Spaulding, Jeff Stefanik, Gail White Usher, Delpha Very, John White, Jack Williamson

Material ~ Andy Quigley, Anthony Reed

Founders' Fund Donors: Anonymous, Dawn C. and Joseph Adiletta, Barbara Bocchino, John and Susan Boland, Arthur and Jacqueline Bondy (in honor of Heathe and Shep Boote), Maureen Broderick, Margaret Ayres and Steven Case, Jean F. Cass (in memory of Richard Cass), Colleen and Robert Cording, Daniel and Paula Coughlin, Barbara Ann Davis, John Day and Jane Doyle, Elizabeth and James Godsman, Paul and Susan Graseck, Martin Halpin, Dave and Judy Hosmer, Edward E. Johnson, Faith and John LeBaron, Mariko and Matthew LeBaron, Mark Longhurst, Kitty and Larry Lowenthal, Laurie Masciandaro, Marilyn and William Masopust, Patrick McBroome, Joan and Robert McNally, Kurt McNally, Faith McClellan, Jean and Jock McClellan, Melita and Timothy Monahan, Margaret Morrissey, Maureen and Peter Olshewski, H. Ray and Christine Paine, Jeff and Lindsay Paul, Bernard and Janice Phaneuf, Ping Identity Corporation, Ellen and William Rewinski, Margaret Rohloff, Cassandra Ryan, Reva Seybolt, Evelyn Cole Smith, Nini Stoddard, David Thompson, Gail White Usher, Daniel and Delpha Very, Allan D. Walker, Jr., Kathi Yokum, Edward R. Zucca, Jr.