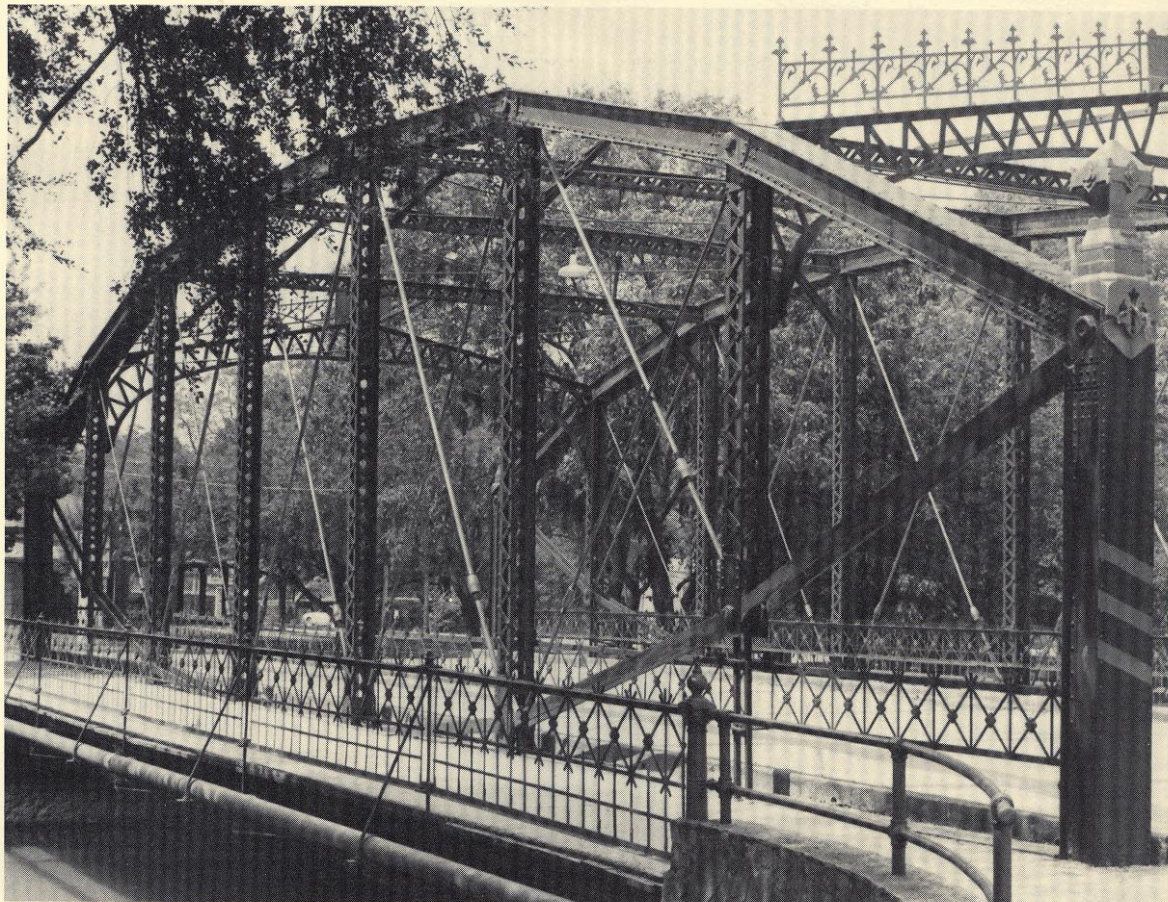
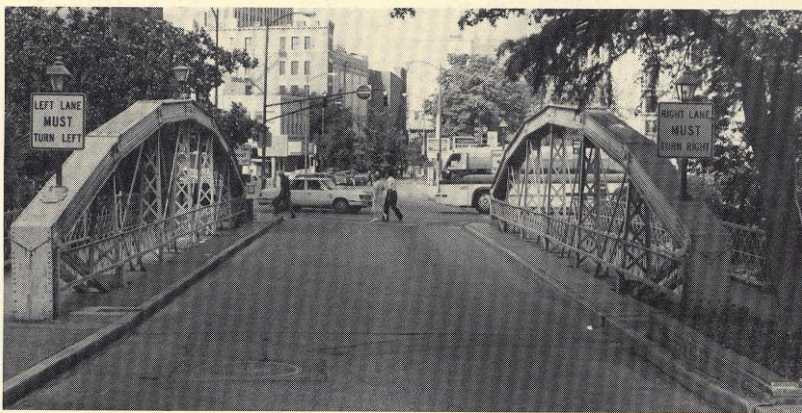
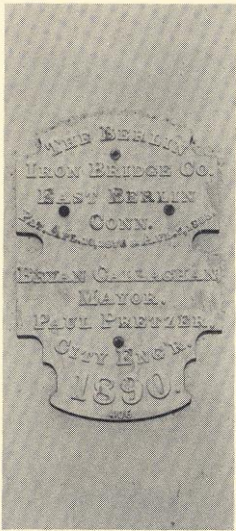


# SPECTACULAR LENTICULAR!



**SURVIVING LENTICULAR TRUSSES IN SAN ANTONIO, TEXAS.** All were built by the Berlin Iron Bridge Co. in the 1890s, and all cross the San Antonio River. The Augusta, Crockett, and South Presa bridges are along the city's famous River Walk (*Paseo del Rio*). *Tex. St. Dept. of Hwys. & Trans. photographs.*

*Top center:* Augusta Street Bridge (1890). This bridge has been rehabilitated. *At left* is the builder's plate. *At right* is a detail from the end post. The small "406" at the bottom is believed to be the contract number.

*Above left:* Crockett Street Bridge (1891), with its top-chord-mounted light standards.

*Above right:* South Presa Street Bridge (1890), showing the lower chord connections with the floor beams.

*Left:* Brackenridge Road Bridge (1890), with its extraordinary cresting. This is one of the state's two lenticular through-trusses.